



BAOS  
presents

BAOS  
presents

# Jekyll and HYDE



## Plan



- Who are we?
  - BAOS
  - Meet the Production Team
- What is JEKYLL AND HYDE?
- Our Vision
- Character Breakdown
- Schedules
  - Workshops
  - Auditions
  - Rehearsals
  - Show Week
- Boring bits (including money and policies)
- Questions



## BAOS (Basingstoke Amateur Operatic Society)



Founded in 1922, Basingstoke Amateur Operatic Society (BAOS) has been a cornerstone of the cultural and performing arts scene in Basingstoke, Hampshire. With a history spanning over a century, BAOS has evolved from a small, passionate group of local opera enthusiasts to a well-respected and vibrant amateur theatre company known for its high-quality productions.

Basingstoke Amateur Operatic Society is more than just a theatre group; it is a community institution with a proud history and a bright future. Through its dedication to the performing arts, BAOS has enriched the cultural life of Basingstoke and provided countless opportunities for local talent to shine. As it enters its next century, BAOS remains committed to its mission of bringing the magic of musical theatre to the heart of Hampshire.



## Production Team



Catherine Hannan  
Director



Ryan Stevens  
Musical Director



# JEKYLL AND HYDE



Music by Frank Wildhorn

Kyrics by Leslie Bricusse

Themes: Duality, morality, repression, and the consequences of tampering with human nature.

- Based on the 1886 novella *Strange Case of Dr Jekyll and Mr Hyde*, which inspired numerous stage and film adaptations before becoming a musical.
- Premiered in 1990 at the Alley Theatre in Houston, where it underwent significant revisions.
- Continued development through multiple productions in the United States during the early 1990s, with changes to songs, structure, and staging.
- Opened on Broadway in 1997 at the Plymouth Theatre, becoming Wildhorn's biggest commercial success.
- Despite mixed reviews, the Broadway production ran for over 1,500 performances, gaining a strong fan base.



## Vision - Jekyll & Hyde - A Steampunk Descent into Darkness



Our production of *Jekyll & Hyde* reimagines this classic tale through a gritty, industrial steampunk lens, transforming a small theatre into a living, breathing machine of suspense, seduction, and psychological horror.

Set in a distorted Victorian underworld where science and savagery collide, the stage becomes an extension of Dr. Jekyll's fractured mind—a place where morality corrodes and control is an illusion. With a minimalist set, we lean into the power of atmosphere over realism, using shadows, steel textures, and fragmented structures that shift and suggest rather than define.

Lighting and haze are at the core of our storytelling. Stark contrasts, sudden blackouts, and creeping fog will disorient and immerse the audience, ensuring they are never certain where danger lurks. Hyde is not confined to the stage—he is everywhere and nowhere, appearing unexpectedly, emerging from darkness, or dissolving back into it. The space itself becomes complicit in his chaos.



## Vision - Jekyll & Hyde - A Steampunk Descent into Darkness



The Red Rat ensemble will be reimagined as a gender-fluid, shape-shifting collective, drawing inspiration from the anarchic decadence of the Kit Kat Club and the raw, revolutionary energy of *Les Misérables*. They are not just patrons of vice—they are extensions of Hyde’s influence, blurring the lines between observer and participant, temptation and threat. Their presence is constant, watchful, and unnervingly playful.

Costume design fuses Victorian silhouettes with mechanical and industrial elements—corsetry meets cogs, top hats paired with goggles, elegance decayed by grime and invention. Each character exists on a spectrum between refinement and ruin.

With a smaller cast of 20, the focus is on bold physical storytelling, ensemble movement, and character doubling, creating a world that feels far larger than the stage allows. Every performer becomes a vital piece of the machine—shifting roles, spaces, and perspectives seamlessly.



**Vision** - Jekyll & Hyde – A Steampunk Descent into Darkness



This is *not* just a story of good versus evil.

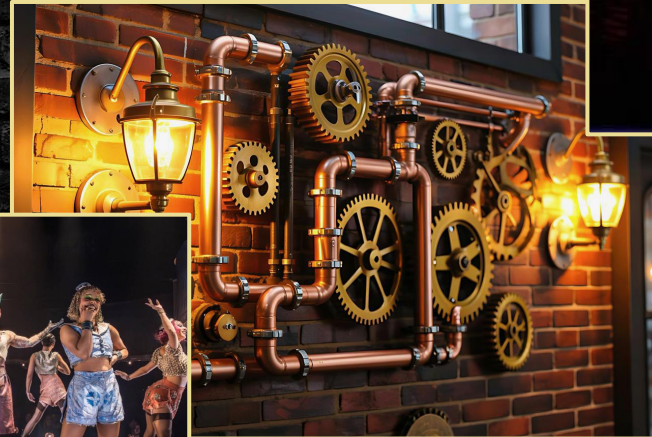
It is a visceral exploration of identity, repression, and the seductive pull of our darker selves.

Intimate, unpredictable, and hauntingly immersive, this production invites the audience to step inside the experiment—and question whether Hyde is ever truly contained.

# Jekyll and HYDE

## Vision

BAOS  
presents





# DR HENRY JEKYLL / MR HYDE



<b>GENDER</b>	Male
<b>AUDITION SONG 1</b>	This is the Moment
<b>AUDITION SONG 2</b>	Confrontation
<b>DIALOGUE 1</b>	P21 "Miss Carew.." to song
<b>DIALOGUE 2</b>	P75 "Henry?" to "God help us all"
<b>VOCAL RANGE</b>	Bb2 - A4

Jekyll is a doctor obsessed with discovering the true nature behind the good and evil in man and Emma's fiancée. After he uses an experimental formula on himself, his evil side - Edward Hyde - takes control. As Hyde, he is violent, commanding, and a sexual deviant attracted to Lucy.





# LUCY HARRIS



<b>GENDER</b>	Female
<b>AUDITION SONG 1</b>	Bring On The Men
<b>AUDITION SONG 2</b>	A New Life
<b>DIALOGUE 1</b>	P49 "I'll see her Poole" to "e's not like you"
<b>DIALOGUE 2</b>	P82 Full page
<b>VOCAL RANGE</b>	G#3 - F#5

The gorgeous 'main attraction' at a local gentlemen's club. At the bottom of her luck, she becomes the object of Hyde's obsession. Lucy is feisty and wild, but also cautious and aware.



LUCY

G#3 F#5



# EMMA CAREW



<b>GENDER</b>	Female
<b>AUDITION SONG 1</b>	Once Upon A Time
<b>AUDITION SONG 2</b>	Facade
<b>DIALOGUE 1</b>	P21 “Miss Carew..” to song
<b>DIALOGUE 2</b>	P64 “What do you want here” to “..only that we would take it together”
<b>VOCAL RANGE</b>	A3 - C6

Emma is a refined, upper-class woman who embodies purity, stability, and hope, shown through her elegant presence and sincere emotions.



EMMA

A3 C6

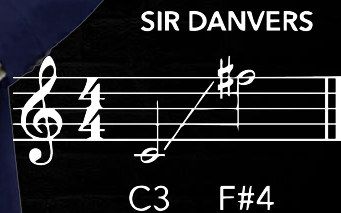
The image shows a musical staff with a treble clef and a 4/4 time signature. The staff contains two notes: a whole note on the first line (A3) and a whole note on the second space (C6). A diagonal line with an upward-pointing arrow connects the two notes, indicating the vocal range. The notes are labeled 'A3' and 'C6' below the staff.



## SIR DANVERS CAREW



GENDER	Male
AUDITION SONG 1	Letting Go
AUDITION SONG 2	Facade
VOCAL RANGE	C3-F#4
<p>Sir Danvers Carew, Emma's kind and respectable father, is a warm, supportive aristocrat who trusts Jekyll, yet also represents the restrictive upper-class world Jekyll longs for but is ultimately drifting away from.</p>	





# GABRIEL JOHN UTTERSON



GENDER	Male
AUDITION SONG 1	Pursue The Truth
AUDITION SONG 2	Facade
DIALOGUE 1	P34 "I must say you're in a better mood" to song
DIALOGUE 2	P75 "Henry?" to "God help us all"
VOCAL RANGE	B2 - F#4

Utterson is Jekyll's loyal friend and a rational, authoritative narrator figure who acts as the audience's moral compass, striving to protect him while balancing his loyalty with growing fear as he uncovers the truth.



UTTERSON



B2 F#4



## SIMON STRIDE

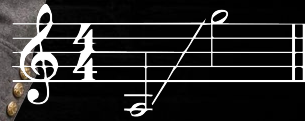


GENDER	Male
AUDITION SONG 1	The Engagement Party
AUDITION SONG 2	Facade
VOCAL RANGE	A2 - G4

Stride is an arrogant, controlling aristocrat and key antagonist who competes with Jekyll and mistreats others. Driven by privilege and entitlement, he contrasts Jekyll, who challenges the system, while Stride benefits from it.



SIMON STRIDE



A2 G4



# LADY BEACONSFIELD



GENDER	Female
AUDITION SONG 1	Board of Governors
AUDITION SONG 2	Facade
VOCAL RANGE	Variety

Lady Beaconsfield is a high-society figure who represents aristocratic privilege and social control. She upholds strict class values and helps maintain the rigid system that limits others, contrasting characters who challenge those norms.



BOARD OF GOVERNORS



Bb<sup>2</sup> G<sup>4</sup>



# BISHOP OF BASINGSTOKE



GENDER	Male/Female
AUDITION SONG 1	Board of Governors
AUDITION SONG 2	Facade
VOCAL RANGE	Variety
A hypocritical, sadistic man of the cloth and a member of the Board of Governors.	



BOARD OF GOVERNORS



Bb2 G4



# LORD SAVAGE



GENDER	Male
AUDITION SONG 1	Board of Governors
AUDITION SONG 2	Facade
VOCAL RANGE	Variety
Lord Savage is a wealthy, entitled aristocrat who embodies privilege and decadence. He exerts influence over others, often selfishly, and reinforces the rigid social hierarchy.	



BOARD OF GOVERNORS



Bb2 G4



# GENERAL LORD GLOSSOP



GENDER	Male
AUDITION SONG 1	Board of Governors
AUDITION SONG 2	Facade
VOCAL RANGE	Variety
A pompous retired army man and member of the Board of Governors.	



BOARD OF GOVERNORS



Bb2 G4



# SIR ARCHIBALD PROOPS



GENDER	Male
AUDITION SONG 1	Board of Governors
AUDITION SONG 2	Facade
VOCAL RANGE	Variety

Archibald Proops is a pompous, self-important bureaucrat who clings to rules and status. He often obstructs others with his rigid adherence to protocol, highlighting the absurdity of social and institutional hierarchy.



BOARD OF GOVERNORS



Bb2 G4



## BAR GIRLS/BOYS/NELLIE



GENDER	Female / Male
AUDITION SONG 1	Bring on The Men
AUDITION SONG 2	Sympathy, Tenderness
AUDITION SONG 3	Facade
VOCAL RANGE	Variety
Bar 'workers' - brash, ballsy but vulnerable.	





## SPIDER



GENDER	Male
AUDITION SONG 1	Facade Reprise 2
AUDITION SONG 2	Facade
DIALOGUE 1	P33 "A little less socialising.." to song
VOCAL RANGE	Variety

He navigates the underworld with cunning and serves as a link between the criminal and upper-class worlds, often motivated by self-interest.





## ENSEMBLE



<b>GENDER</b>	Female / Male
<b>AUDITION SONG 1</b>	Facade
<b>VOCAL RANGE</b>	Variety
Aristocrats; Citizens; Servants; Party Guests; Prostitutes; Policemen	



## Schedule



### Welcome and Workshops

Tuesday 7th April - WELCOME LAUNCH      St Bede's    20:00-22:00

Thursday 9th April - Workshop 1              St Bede's    20:00-22:00

Tuesday 14th April - Workshop 2            St Bede's    19:30-22:00

Thursday 15th - Workshop 3                  St Bede's    19:30-22:00

A yellow bracket on the left side of the last two rows of the schedule groups them together. A yellow line extends from the bottom of the bracket, pointing towards the text 'Musical Director Timed Slots'.

Musical Director Timed Slots



## Schedule



Booked Timed Slots - St Bede's Catholic Primary School

Tuesday 14th April      Ryan 19:30-22:00

Thursday 16th April      Ryan 19:30-22:00

TIMED SLOT BOOKINGS

<https://baos.setmore.com>

10min booking windows



## Schedule



Auditions St Mark's School, Basingstoke

Sunday 19th April - AUDITIONS 10:00-18:00

Monday 20th April - CALLBACKS 20:00-21:30

### AUDITION TIMED SLOT BOOKINGS

10min for each character

*(one slot per character)*

Auditions are not memory tests.....we want to see character.



## Schedule



### Rehearsals

Tuesdays and Thursdays      St Bede's      19:30-22:00

Sundays      Usually St Bedes      11:00-17:00



## Schedule



Show Week

Get-in                      Mon 14th July

Performances            Wed 22 - Sat 25 July 2026 19:30

Central Studio, Queen Mary's College



## The Boring Bits...



- You must be a member to audition (£25.00) - *this must be paid before you audition.* All new members of BAOS will have to complete a quick new member audition at any pre-audition rehearsal. This involves singing a short snippet of a song (about 30 seconds) of your choice – this can be as simple as ‘Happy Birthday’.
- Show Fee is £90.00 (to be fully paid by end of June)
- You will need to attend one workshop (this includes this Welcome Launch).
- BAOS has a Code of Conduct and Safeguarding policies - you will be expected to follow these.
- You will be expected to help promote the show and sell those tickets (promo date to be confirmed).



Any  
Questions?



# Audition info/pieces and booking slots

